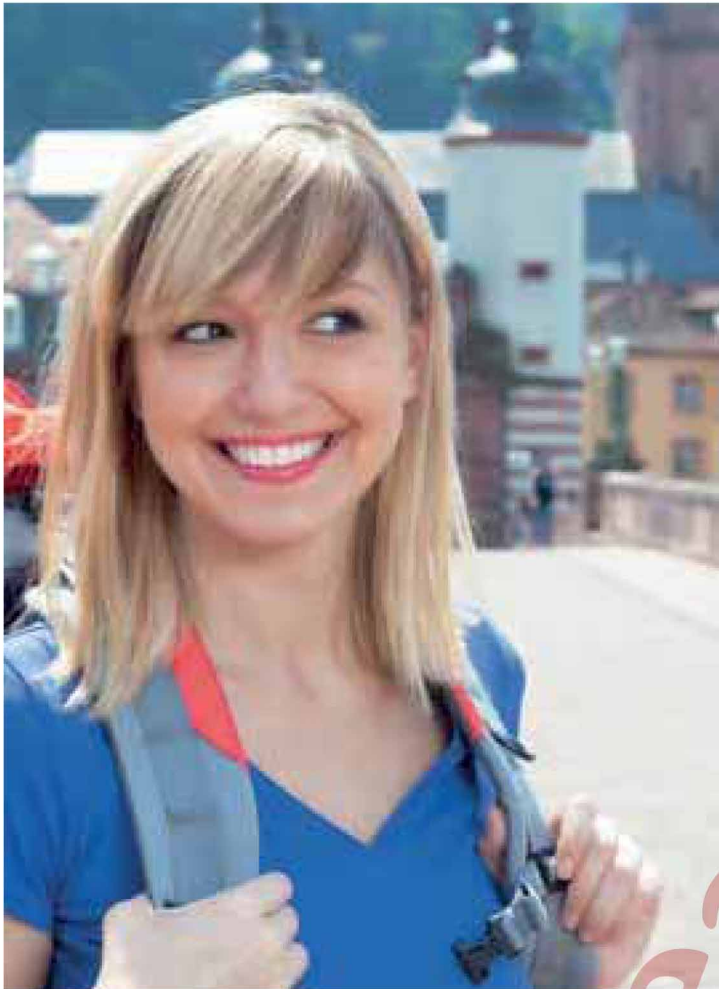
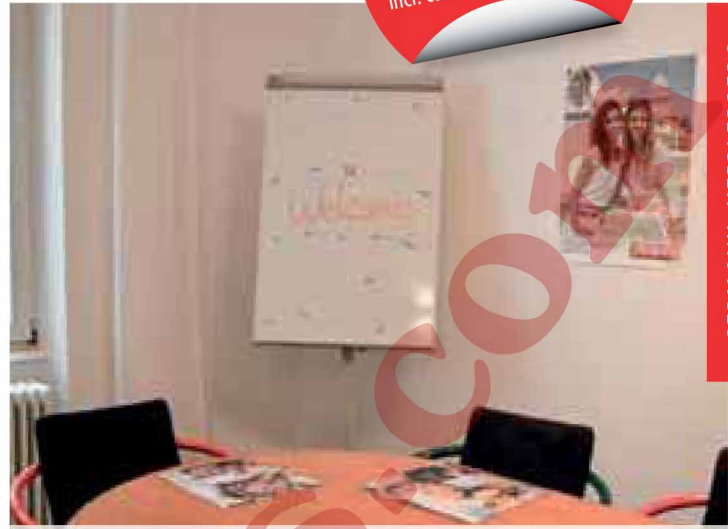


6 weeks starting from  
**2.230,-** EUR  
 Incl. course & accommodation

GERMANY: HEIDELBERG



Explore the city of Heidelberg and experience first-hand the many details which make the city such an ideal place to study the German language.



Centrally located, our school offers modern and well-equipped classrooms, facilities and technology to learn a language in an international environment.



Conveniently located, our residence offers comfortable rooms, a cafeteria and a lounge. Students will be accommodated in double or single rooms with shared bathrooms.



**Checklist**

- Language course as booked – Registration fee: EUR 60
- Accommodation as booked – Placement fee: EUR 80
- Letter of acceptance for visa purposes: EUR 50 (non-refundable)
- Placement test and certificate included in the price
- Textbooks on loan (EUR 6 / week, EUR 18 deposit) or on sale at school

Tuition	1 - 8 weeks	9+ weeks
Prices per week EUR / Registration Fee: 60		
<b>Standard Course</b> 20 lessons per week / max. 12 students per class	160	130
<b>Intensive Course</b> 30 lessons per week / max. 12 students per class	230	200
<b>One to One Course</b> (also online before / after your stay available) 5 days per week / 2 lessons daily (for 4 or 6 lessons daily multiply accordingly)	400	400

Accommodation (Sunday – Saturday)		Season C
Prices per week in EUR + Placement fee: 80		Jun 21 - Aug 22
<b>Standard Apartment</b>	🛏️🛏️	215
	🛏️	285
<b>Comfort Apartment</b>	🛏️🛏️	245
	🛏️	315
<b>Homestay</b>	BB	275
	HB	335

**Course starting dates for all levels but elementary students: every Monday from June 22 - August 29**  
**Course starting dates for elementary students 2020:**

June: 22 + 29      July: 13 + 27      August: 10

For bookings sent after Dec 1st, the new pricelist will apply.

**The school will be closed on the following public holidays in 2020:**

Until June 2020: 20      August: 30 - December: 31





## Science Plus Romance

This city on the banks of the Neckar, holds one of Europe's reputable universities & is bound to win your heart at once.

*Heidelberg. Its beauty and timelessness inspired the German Romantic Movement and it continues to inspire people today. Known for its university and castle, Heidelberg celebrates both the old and the new, making it the perfect place for everyone.*



**Established in 1983**



**Capacity around 180 students**

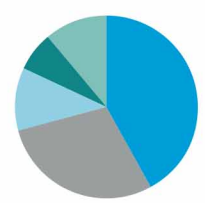


**Café, terrace  
Student lounge  
Student library**



**Common rooms  
Computer area**

**Student population**



Western Europe	42%
Eastern Europe	29%
Asia	11%
Others	11%
Americas	7%

