



English/French in Canada

SPRACHCAFFE

Montréal

6 weeks starting from
2.610,- CAD
Incl. course & accommodation



Our school, furnished with modern equipment, provides students with outstanding course quality and the perfect study environment – even during your breaks!

Checklist

- Language course as booked – Registration fee: CAD 150 (non-refundable)
- Accommodation as booked – Placement fee: CAD 200 (non-refundable)
- Study Club
- Letter of acceptance for visa purposes included in the registration fee
- Placement test and certificate included in the price
- Textbooks at school (on loan CAD 10 / week, CAD 80 deposit)

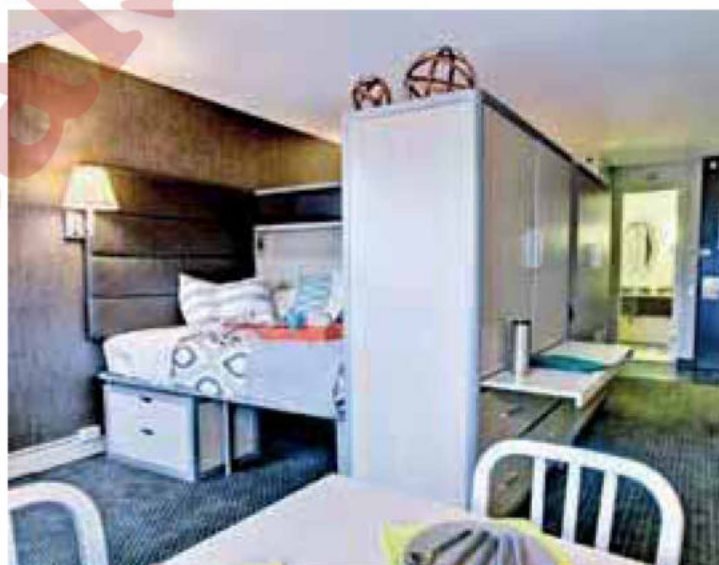
Tuition

Prices per week in CAD + Registration fee: 150

Part-Time Course				
10 lessons per week / max. 14 students per class	140	125	105	
Standard Course				
20 lessons per week / max. 14 students per class	270	255	235	
Standard Plus Course				
24 lessons per week / max. 14 students per class	310	295	275	
Intensive Course				
30 lessons per week / max. 14 students per class	360	345	325	
Super Intensive Course				
40 lessons per week / max. 14 students per class	430	415	395	
Study Club				
Tricky questions or creative brainstorming - our study club is your best coach! Recap of the lessons, assistance with homework and much more – without extra costs! 2 lessons per week	incl.	incl.	incl.	
Workshops (Duration: 1 week each, English only)				
10 extra lessons per week / max. 10 students per class				
Mondays of month:	1st	2nd	3rd	4th
Business English	✓	✓	✓	✓
Communication Skills	✓	✓	✓	✓
Job Applications & Interview	✓	✓	✓	✓
Sales & Marketing	✓	✓	✓	✓
Business Negotiations	✓	✓	✓	✓
Public Speaking & Presentation	✓	✓	✓	✓
IELTS / TOEFL Exam Preparation (Duration: 12 weeks)				
(30 lessons per week / max. 14 students per class / Exam fee not included)	-	345	-	
Starting dates: on average every 4 weeks				
Intensive English for Academic Purposes / University Pathways				
30 lessons per week / max. 14 students per class. Processing fee: + 300	-	345	325	
Super Intensive English for Academic Purposes / University Pathways				
40 lessons per week / max. 14 students per class. Processing fee: + 300	-	415	395	
One to One Course				
(also online before / after your stay available)	500	500	500	
5 days per week / 2 lessons daily (for 4 or 6 lessons daily multiply accordingly)				



In Montréal there is always something to discover, only made more fun by the company of your new friends and fellow students from Sprachcaffe. By living among the locals, students build their vocabulary naturally and effortlessly, regardless of whether they're learning English or French.



Ideal studying conditions: our residence offers every amenity you need for a successful learning experience.

Accommodation (Sunday – Saturday)	Season A	Season B	Season C
Prices per week in CAD + Placement fee: 200	until Mar 28 / from Sep 27	Mar 29 - Jun 20 / Aug 23 - Sep 26	Jun 21 - Aug 22
Homestay HB	260	285	310
	280	305	330
Homestay FB	280	305	330
	300	325	350
Residence	370	395	420
	420	445	470

Course starting dates for all levels but elementary students: every Monday
Course starting dates for elementary students 2020:

January: 6
February: 3
March: 2 + 30
April: 6
May: 4
June: 1 + 29
July: 27
August: 24
September: 21
October: 19
November: 16
December: 14

January 2021: 4
February 2021: 1
March 2021: 1
For bookings sent after Dec 1st, the new pricelist will apply.

The school will be closed on the following public holidays in 2020:

January 2020: 1
April: 13
May: 18
June: 24
July: 1
September: 7
October: 12
December 2020: 25 - January 2021: 1

CANADA: MONTRÉAL



English/French in Canada

SPRACHCAFFE

Montréal

Accredited by



One City – Two Cultures

With its cultural mixture and international festivals this bilingual city attracts visitors from all over the world.

Our centrally located school in Montréal is situated just five minutes from the most exciting shopping street in Canada and surrounded by an abundance of international restaurants.



**Established
in 1998**



**Capacity
around 150 students**



**Open-space concept
lounge-kitchen
Patio deck**



**Free internet access
Computer area**

Student population



Western Europe	30 %
Americas	24 %
Asia	23 %
Eastern Europe	13 %
Others	10 %

