

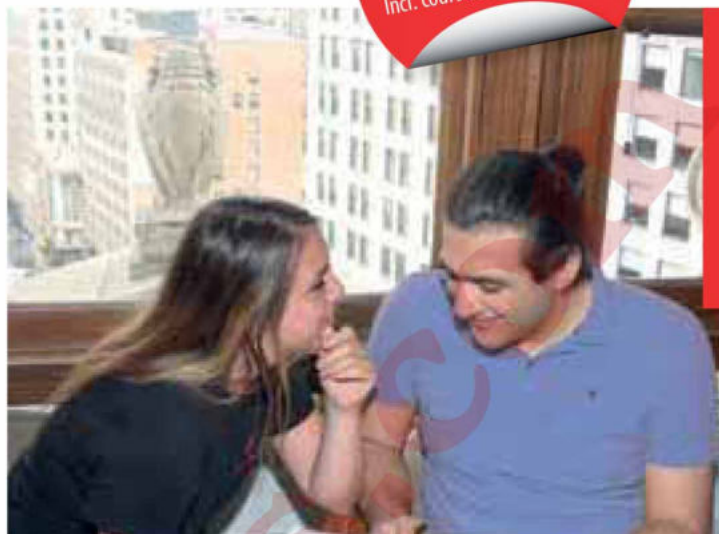


English in the USA

SPRACHCAFFE

New York

6 weeks starting from
3.320,- USD
Incl. course & accommodation



USA: NEW YORK

Our first-class school in New York combines the exhilarating tourist vibe with talented and friendly English teachers, and a relaxed school setting in the centre of one of the world's most popular cities.



Whatever you prefer: authentic host family or modern Sprachcafe residence. Students are well cared for in both and can decide which suits their needs best.

Tuition						1 - 8 weeks	9 - 16 weeks	17+ weeks
Prices per week in USD + Registration fee: 100								
Part-Time Course								
10 lessons per week / max. 14 students per class						190	175	155
Standard Course								
20 lessons per week / max. 14 students per class						330	315	295
Standard Plus Course								
24 lessons per week / max. 14 students per class						375	360	340
Intensive Course								
30 lessons per week / max. 14 students per class						410	395	375
Super Intensive Course								
40 lessons per week / max. 14 students per class						460	445	425
Study Club								
Tricky questions or creative brainstorming - our study club is your best coach! Recap of the lessons, assistance with homework and much more - without extra costs! 2 lessons per week						incl.	incl.	incl.
Workshops (Duration: 1 week each)								
10 extra lessons per week / max. 10 students per class								
Mondays of month:								
Business English						✓	✓	✓
Communication Skills						✓	✓	✓
Job Applications & Interview						✓	✓	✓
Sales & Marketing						✓	✓	✓
Business Negotiations						✓	✓	✓
Public Speaking & Presentation						✓	✓	✓
IELTS / TOEFL Exam Preparation (Duration: 12 weeks)								
(30 lessons per week / max. 14 students per class / Exam fee not included)						410	395	-
Starting dates: on average every 4 weeks								
Intensive English for Academic Purposes / University Pathways								
30 lessons per week / max. 14 students per class. Processing fee: + 300						-	395	375
Super Intensive English for Academic Purposes / University Pathways								
40 lessons per week / max. 14 students per class. Processing fee: + 300						-	445	375
One to One Course								
(also online before / after your stay available)						500	500	500
5 days per week / 2 lessons daily (for 4 or 6 lessons daily multiply accordingly)								

Checklist

- Language course as booked – Registration fee: USD 100 (non-refundable)
- Accommodation as booked – Placement fee: USD 200 (non-refundable)
- Study Club
- Letter of acceptance for visa purposes included in the registration fee
- Placement test and certificate included in the price
- Textbooks at school (on loan USD 10 / week, USD 80 deposit)

Accommodation (Sunday – Saturday)		Season A	Season B	Season C
Prices per week in USD + Placement fee: 200		until Mar 28/ from Sep 27	Mar 29 - Jun 20/ Aug 23 - Sep 26	Jun 21 - Aug 22
Homestay HB	↔↔	345	360	395
	↔	365	380	415
Homestay FB	↔↔	365	380	415
	↔	395	410	445
Residence	↔↔	565	580	615
	↔	615	630	665

Course starting dates for all levels but elementary students: every Monday Course starting dates for elementary students 2020:

January: 6	May: 4	September: 21	January 2021: 4
February: 3	June: 1 + 29	October: 19	February 2021: 1
March: 2 + 30	July: 27	November: 16	March 2021: 1
April: 6	August: 24	December: 14	For bookings sent after Dec 1st, the new pricelist will apply.

The school will be closed on the following public holidays in 2020:

January 2020: 1 + 20	October: 12
February: 17	November: 26 - 27
May: 25	December 2020: 25 -
July: 3	January 2021: 1 + 20
September: 7	February 2021: 17



The City That Never Sleeps

Also known as Big Apple, New York City is a melting pot and the gateway to almost unlimited opportunities.



Our New York centre is located in the heart of the Financial District and features stunning views of the Statue of Liberty. Here, you can not only improve your English, but also gain life-changing experiences.



Established
in 1973



Capacity
around 150 students



Kitchenette
Student lounge
Study room



Free internet access
Computer lab

Student population



Western Europe	40 %
Asia	25 %
Others	21 %
Eastern Europe	11 %
Americas	3 %

